

US 51 STUDY IN BARDWELL

Public Information Meeting



July 1, 2003



WELCOME

To Public Meeting #2

For the US 51 Study in Bardwell

- Thank you for your great participation at meeting #1!
- Your input was very valuable in developing and evaluating the 9 preliminary alternatives.
- We look forward to receiving your feedback on the 4 remaining refined alternatives.



PURPOSE OF THIS MEETING

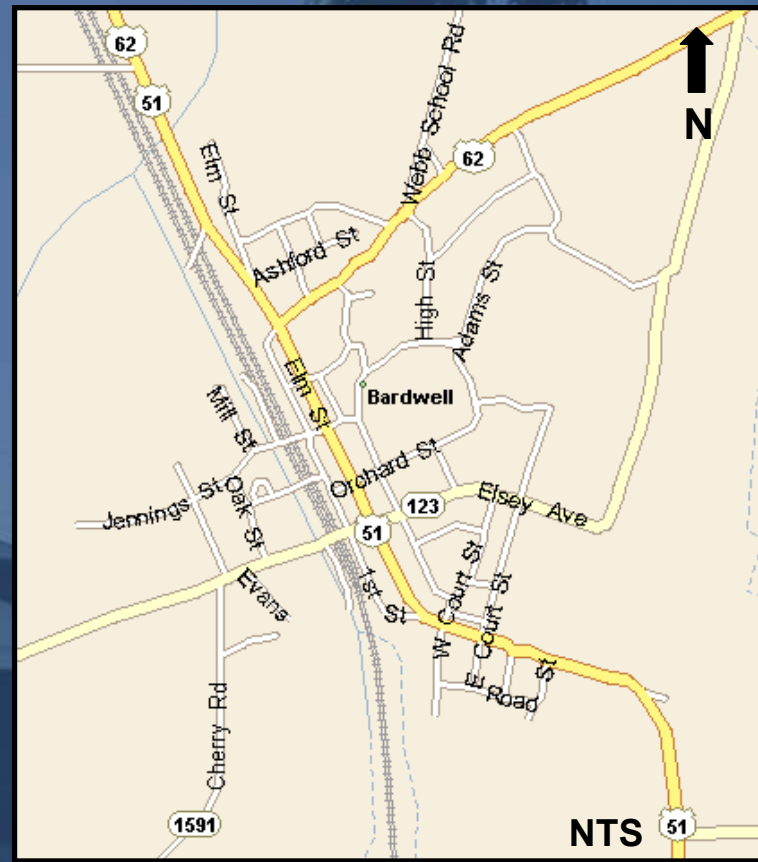
1. Briefly Review Project Status

2. Present the Alternatives

3. Obtain Your Feedback

– Comment Forms





US 51 STUDY AREA BARDWELL, KY

STUDY OBJECTIVES

1. Examine the current and future traffic and transportation conditions on US 51
2. Determine where (or if) there are problems or deficiencies
3. Define project issues and goals
4. Develop a range of alternative improvements
5. Evaluate and compare the proposed alternatives (including the no-build option)
6. Recommend a preferred alternative or set of alternatives for implementation

PROJECT GOALS

1. Mitigate the negative impacts of heavy truck traffic on US 51, while maintaining an efficient through route
2. Preserve downtown business and community character
3. Maintain appropriate traffic controls and traffic flow
4. Avoid, minimize, and/or mitigate property takings as well as other community and environmental impacts
5. Improve highway geometry and drainage
6. Enhance vehicle and pedestrian safety
7. Enhance the visual aspects of the community infrastructure and provide improved bike/ped. facilities in keeping with local economic development goals



STUDY PROCESS / SCHEDULE



EVALUATION PROCESS

Alternatives

Performance Measures

Level 1

All Possibilities

Initial Review

Level 2

Conceptual

Screening Analysis

Level 3

Refined

Detailed Analyses

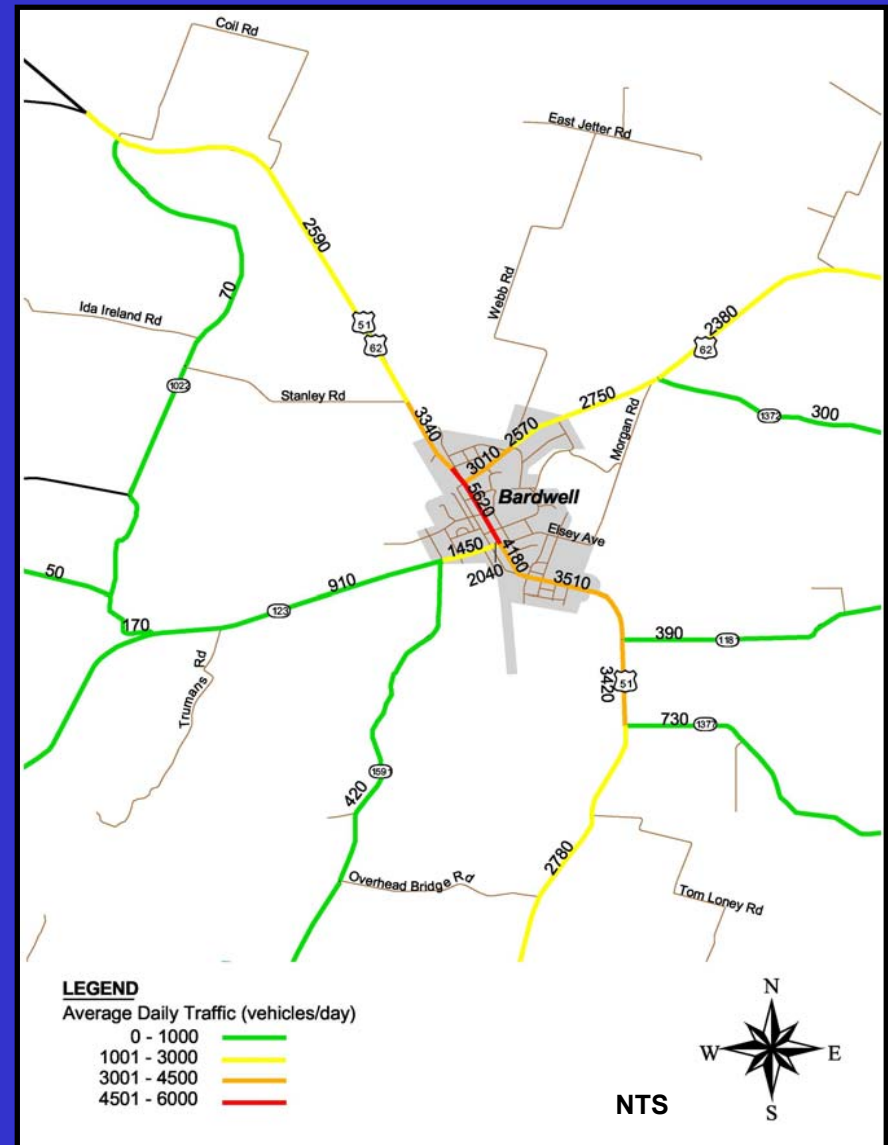
Recommendation (s)



EXISTING TRAFFIC VOLUMES

Traffic Volumes

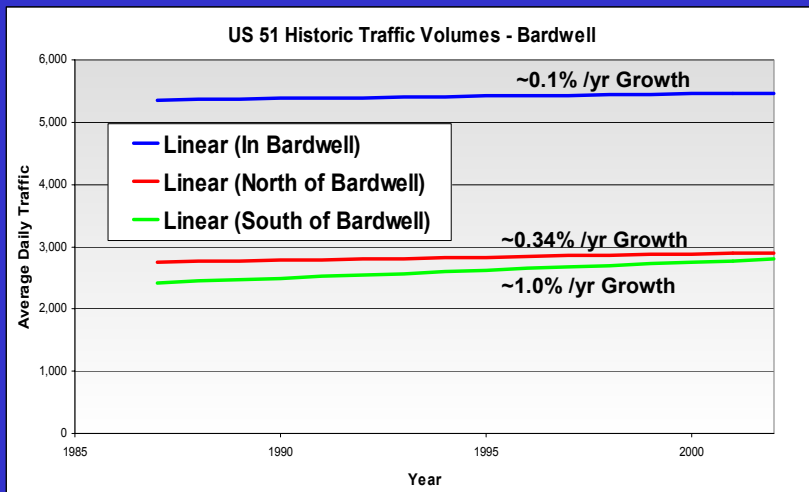
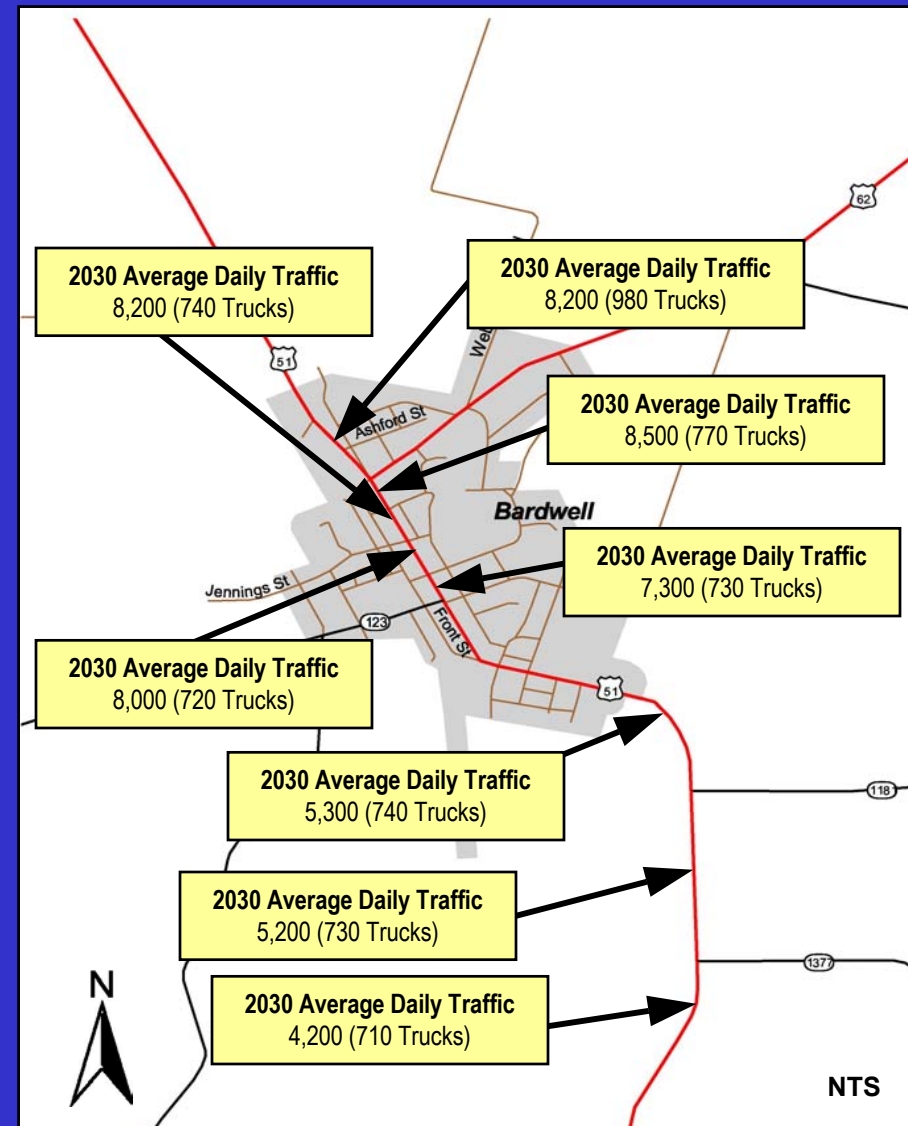
- Low Volumes Except on US 51 in Town
- Approx. 2,800 Through Trips on US 51
- Approx. 500 Through Truck Trips on US 51



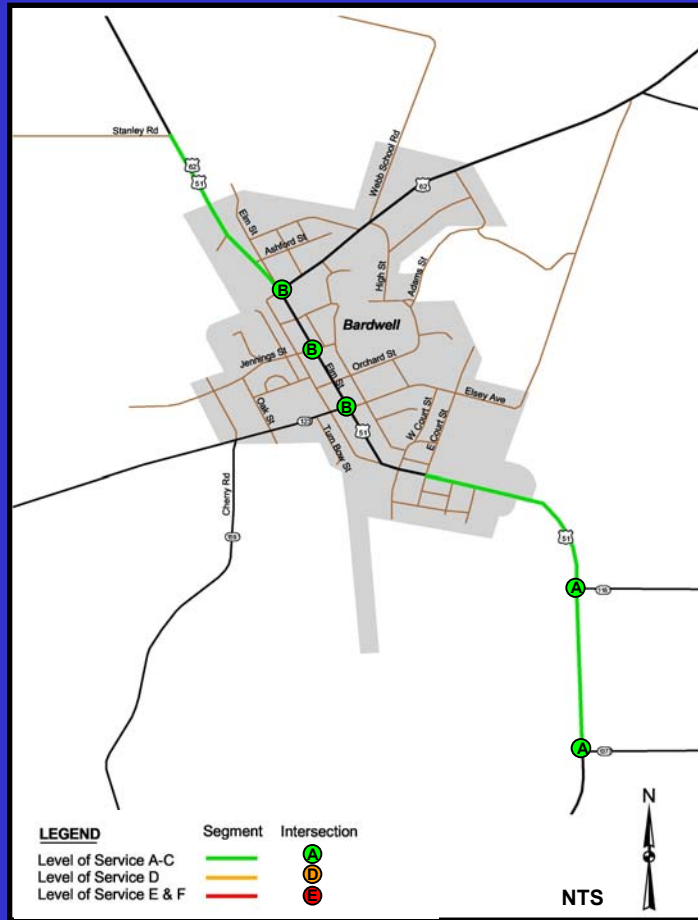
FUTURE TRAFFIC VOLUMES

Traffic Volumes

- Volumes Peak Just South of US 51 and US 62 in Town
- Through Traffic on US 51 Estimated at Approx. 4,200 Trips
- Through Truck Traffic on US 51 Estimated at Approx. 700 Trips
- Assumed 1.5% Annual Growth (Overall Historic Growth from 1987 to 2003 is ~0.6% Annually, Population Stable)

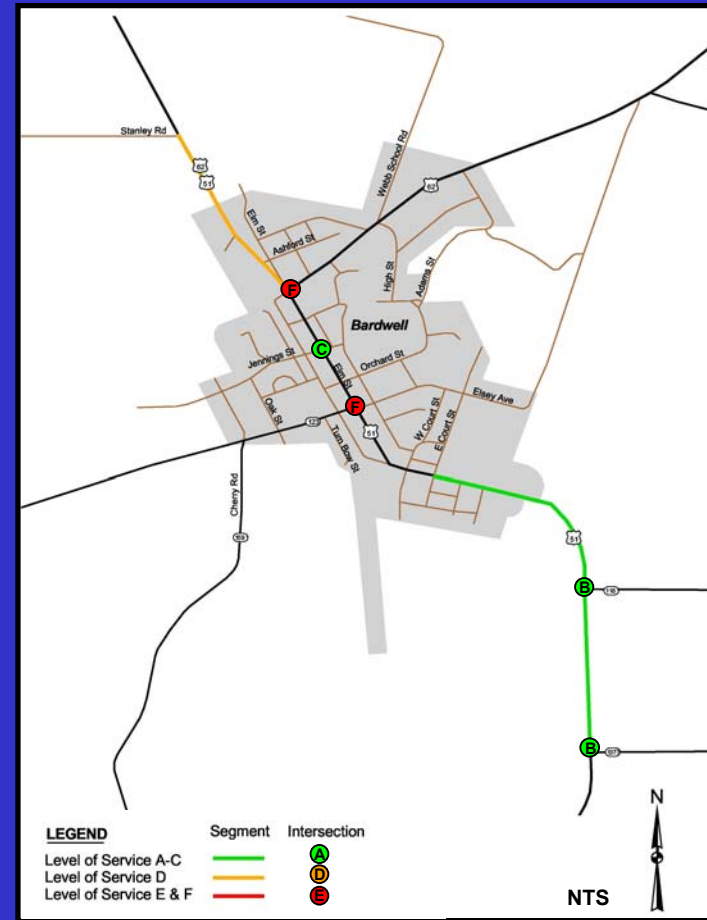


EXISTING AND FUTURE TRAFFIC CONDITIONS



2002 LOS

No Deficiencies

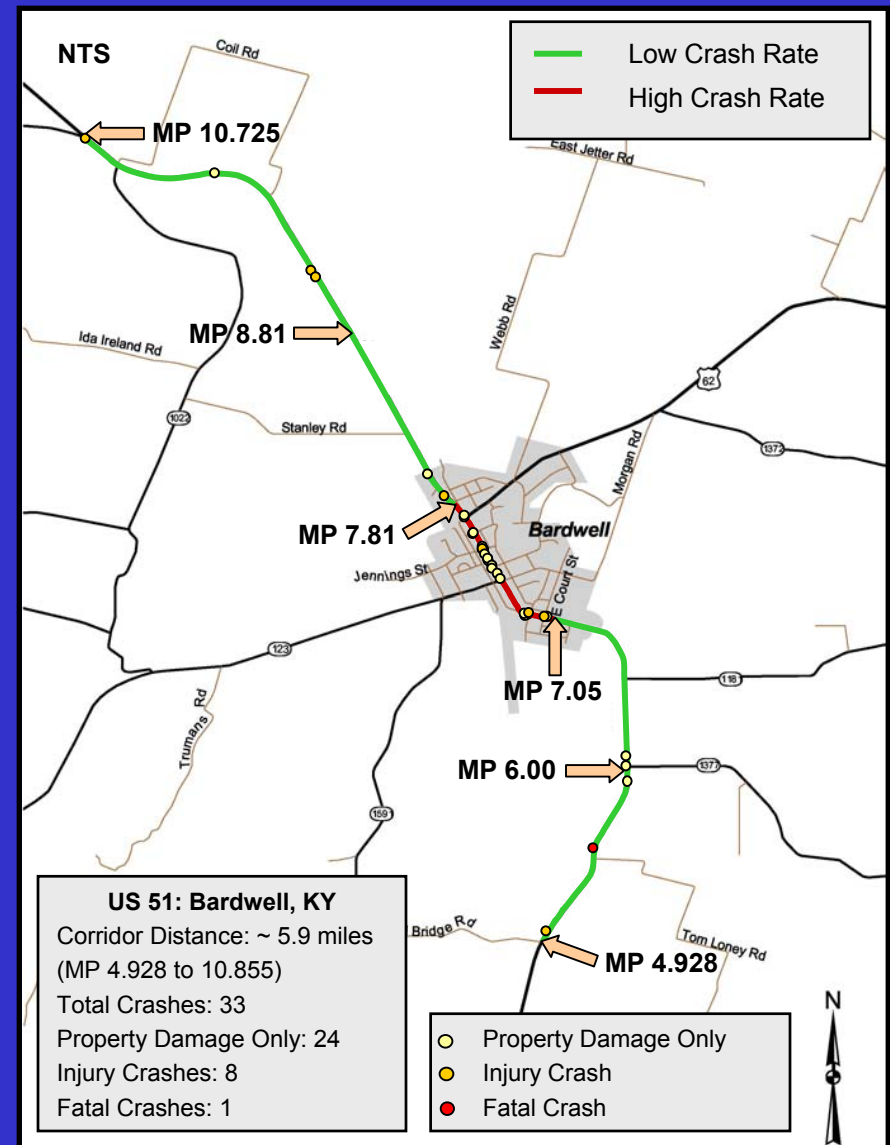


2030 LOS

**Two Intersections in Town and
Section of US 51 North of Town
Degrade to Undesirable LOS
Without Improvements**

CRASH LOCATIONS AND RATES

- Crash Rate in Town is Approximately 1.5 Times the Statewide Crash Rate
- Highest Cluster of Crashes Between Jennings Street and KY 123



LEVEL 1 ALTERNATIVES ANALYSIS

Level 1 – Initial Screening

- 9 Preliminary Alternatives
- Alternatives 5B, 6, and 7 Dismissed

Alternative 5B

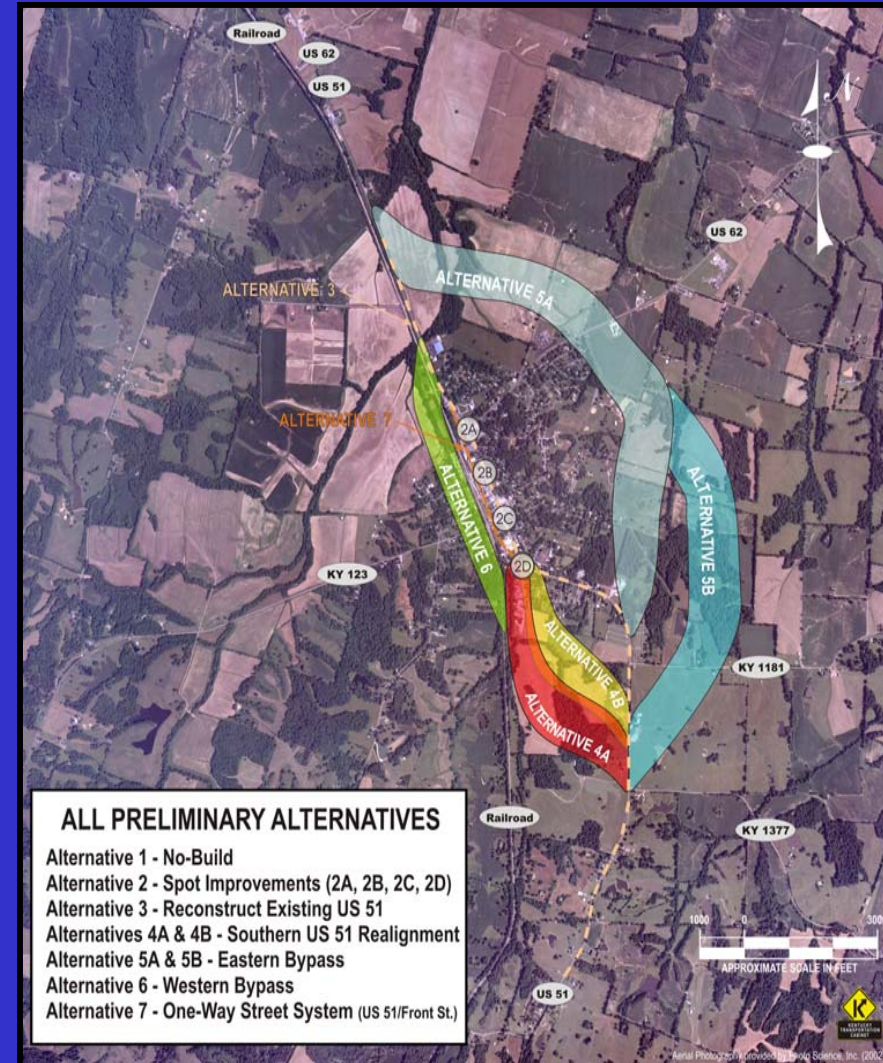
- Community / Environmental Impacts, Length, Cost, Minimal Public Support, Prefer 5A

Alternative 6

- Cost, Feasibility, Community Impact, Environmental Impact, Minimal Public Support

Alternative 7

- Traffic Flow, Safety, Community Impact, Minimal Public Support



LEVEL 2 ALTERNATIVES ANALYSIS

Level 2 – Preliminary Analysis

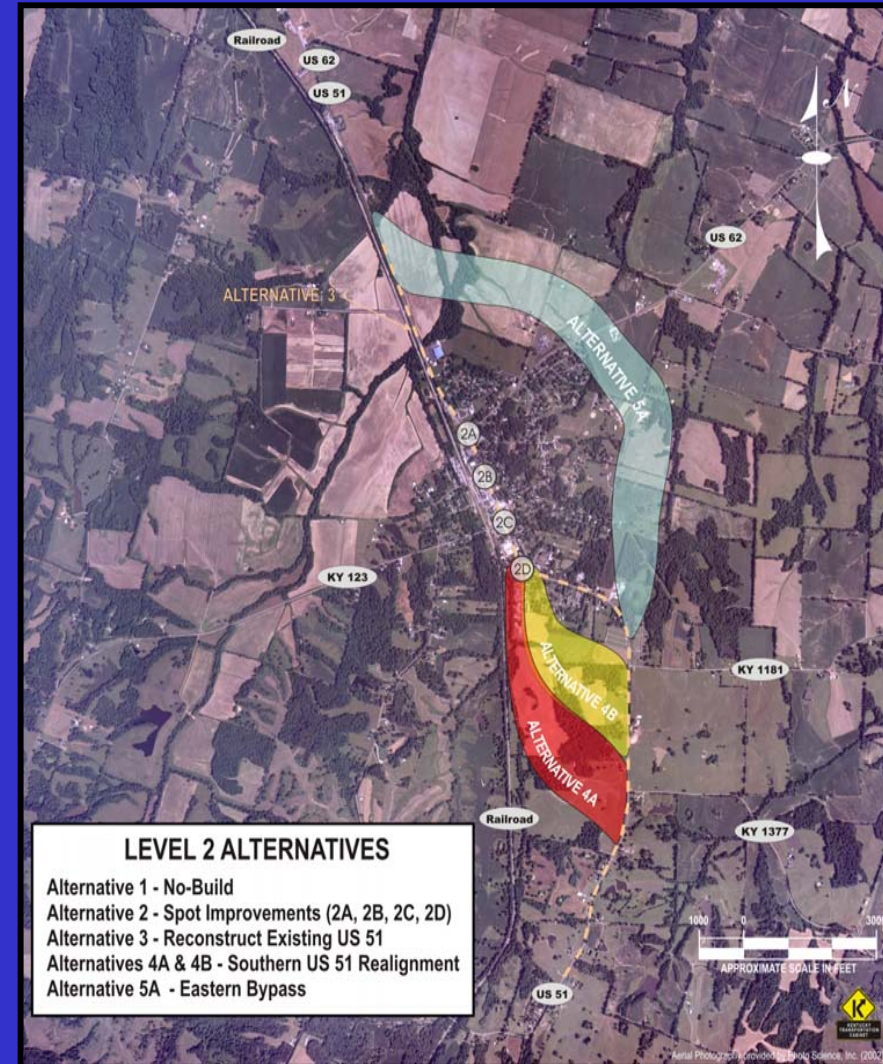
- 6 Alternatives Advanced From Level 1
- Alternatives 4A and 5A Dismissed

Alternative 4A

- Environmental Impacts Including Stream Relocation, Prefer 4B

Alternative 5A

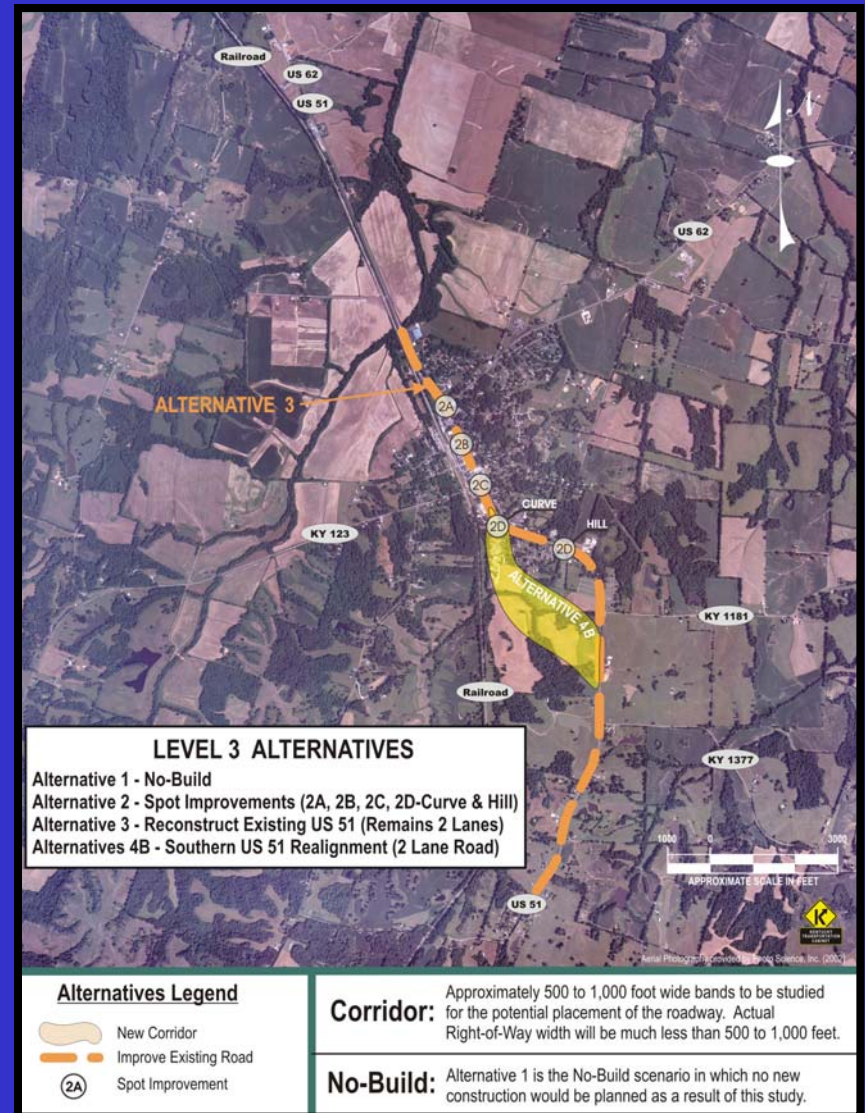
- Does Not Address Safety Issues in Town, Community Impacts, Public Opposition, Environmental Impacts, Cost



LEVEL 3 ALTERNATIVES ANALYSIS

Level 3 – Detailed Analysis

- 4 Alternatives Advanced From Level 2
- Alternative 2 Includes Five Spot Improvements
- Posted Throughout the Room



WE WANT YOUR INPUT

Comment Forms

- Rate the 4 Remaining Alternatives
- Short-Term Recommendations
- Long-Term Recommendations
- Identify the Worst Remaining Alternative
- Provide Additional Comments on Any of the Refined Alternatives

THANK YOU

Thank you for attending, we value your input!

If you have further questions or comments please contact:

Charles David Martin, P.E.
Division of Planning
Kentucky Transportation Cabinet
Tel: 502-564-7183 ext. 4412

Or write to:

Annette Coffey, P.E., Director
Division of Planning
Kentucky Transportation Cabinet
125 Holmes St.
Frankfort, KY 40622

